

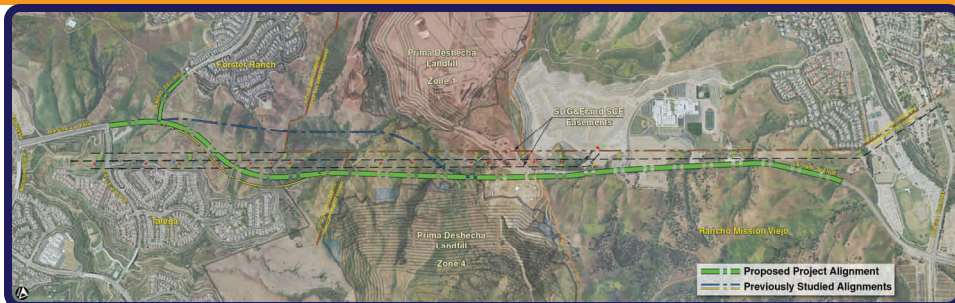
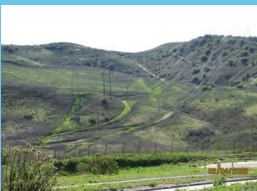


**COUNTY OF ORANGE**  
**300 N. FLOWER ST.**  
**SANTA ANA, CA. 92703**

# La Pata Gap Closure and Camino del Rio Extension Fact Sheet 1

NOVEMBER 2009

- Current effort is for preparation of an Environmental Impact Report.
- Environmental work will take about 15 months to complete.
- The "Proposed Project" is a minimum of 350 feet from the nearest Talega property.
- Camino del Rio extension will connect with future La Pata
- Environmental Review will analyze both roadways as 4 lane facilities.
- La Pata Gap Closure is about 2 miles in length.
- Camino del Rio Extension is about 1/4 mile in length.



## Overview/Scoping Meeting

The County of Orange is conducting preliminary alignment and environmental studies for the La Pata Gap Closure and Camino del Rio Extension projects.

The process includes studying environmental impacts for the "Proposed Project" and reviewing several previously studied alignments. The "Proposed Project" provides a minimum separation of 350 feet from the nearest residence in the Talega development. Proposed improvements will ease local traffic while minimizing environmental impacts.

The process is expected to take about 15 months to complete. **A public scoping meeting will take place at 7 p.m. December 2, 2009 at the San Clemente Community Center, located at 100 N. Calle Seville,** to gather community input and provide critical project information.

Public participation throughout the process is essential.



## Project

The project proposes to extend the 1.8 mile existing section of La Pata Avenue south of Ortega Highway, roughly 2 miles south to connect with existing La Pata Avenue in San Clemente at Calle Saluda. The project would close the "gap" between the two roadway segments and provide a critical link in the regional roadway network. The proposed project will also consider the Camino del Rio quarter-mile extension to future La Pata Avenue, from where it currently ends east of Camino de Los Mares. Both roadways are proposed as four-lane facilities. All trail connections will be maintained.

## Tentative Schedule

Public Scoping Meeting.....December 2-2009  
 Draft Environmental Doc.....Spring-2010  
 Public Comment Period.....Spring/Sum.-2010  
 Public Meeting.....Summer-2010  
 Final Environmental Report.....Fall-2010  
 Certify Environmental.....Fall/Winter-2010

## Stay Connected

**On the Web**  
[www.ocpublicworks.com](http://www.ocpublicworks.com)

**Or Contact**  
 Harry Persaud-Project Manager  
 300 N. Flower, 5th Flr. #509  
 Santa Ana, Ca. 92703-5000  
 (714) 834-2694  
[harry.persaud@ocgov.com](mailto:harry.persaud@ocgov.com)