

PROJECT ALERT

Santa Ana River Flood Control Channel

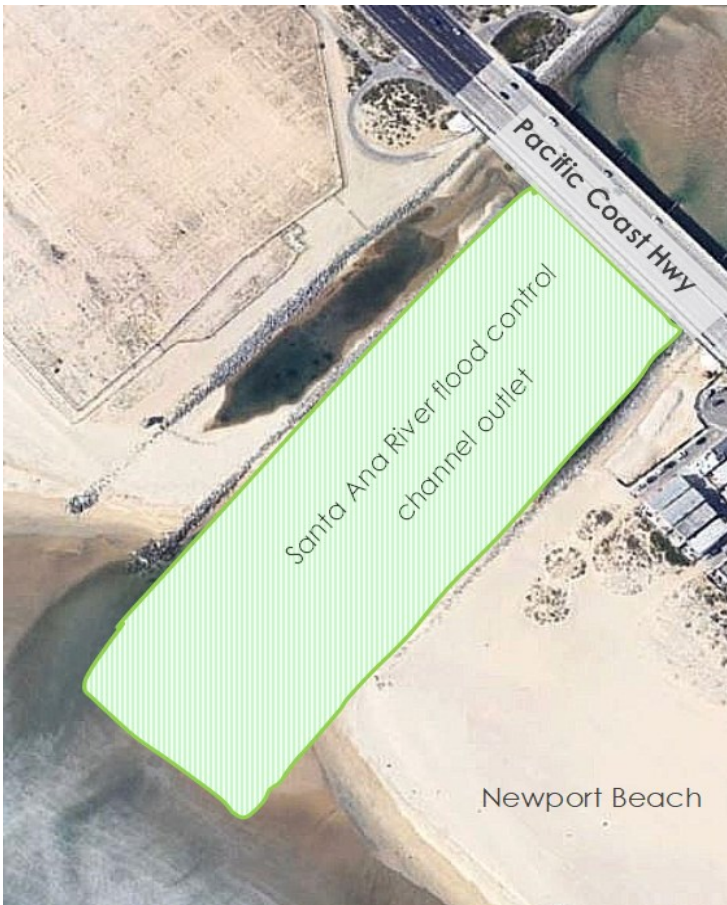
Annual Maintenance: Excess Sand Removal from Channel Outlet, Operation of Large Equipment

Large equipment will be used at the Santa Ana River outlet and along Newport Beach areas. Crews will remove excess sand that naturally accumulated in the flood channel outlet area. This is routine maintenance performed annually before the storm season to prevent water flow blockages. This is being done in coordination with the State Lands Commission for State-owned land located at the shoreline.

WHERE

At the Santa Ana River flood control channel outlet between the cities of Huntington Beach and Newport Beach, west of Pacific Coast Highway.

*** See other side for sand placement location**



WHAT

1. Approximately up to 70,000 cubic yards of accumulated sand will be removed from the channel outlet near the shoreline, as allowed through regulatory permits for flood control maintenance. Removing the excess sand minimizes potential flood risks during rain events and also maintains the natural tidal flow with the adjacent Newport Shores marsh area. Removed sand will be visually inspected for notable debris that will be removed prior to placement on beach areas.
2. In coordination with the City of Newport Beach, crews will transport the removed sand to City beach areas that will benefit most from sand replenishment.

Your safety is the top priority! Large equipment will be used. Please observe all caution signs / barriers and stay a safe distance from the work area.

WHEN

Anticipated Project Duration:

September 26 — late November, 2022

Equipment Operation Hours:

Monday through Saturday, 7 a.m. — 6 p.m.

NOTE: Crew members may be on site starting at 6 a.m. Work schedule is tentative and subject to change.

CONTACT INFORMATION

  Shannon Widor, OCPW | 714.667.9759

 www.ocpublicworks.com


 ProjectInfo@ocpw.ocgov.com

 [Facebook.com/ocpublicworks](https://www.facebook.com/ocpublicworks)

 [Twitter.com/ocpublicworks](https://twitter.com/ocpublicworks)

Santa Ana River Flood Control Channel Annual Maintenance: Excess Sand Removal

Sand Placement Location

 Sand replenishment area:
Between 52nd Street and 40th Street

